



GMT MONTHLY MEMBERSHIP PROGRESS REPORT

Results as of: 6/30/2019

Multiple District 33

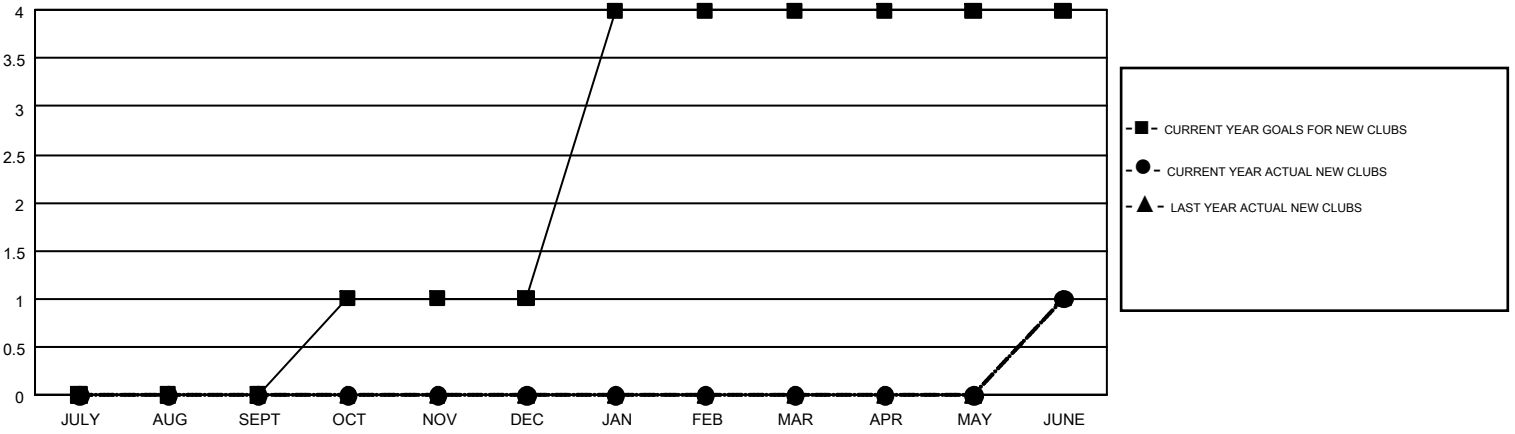
LOCATION: MASSACHUSETTS

GMT: MAHESH CHITNIS

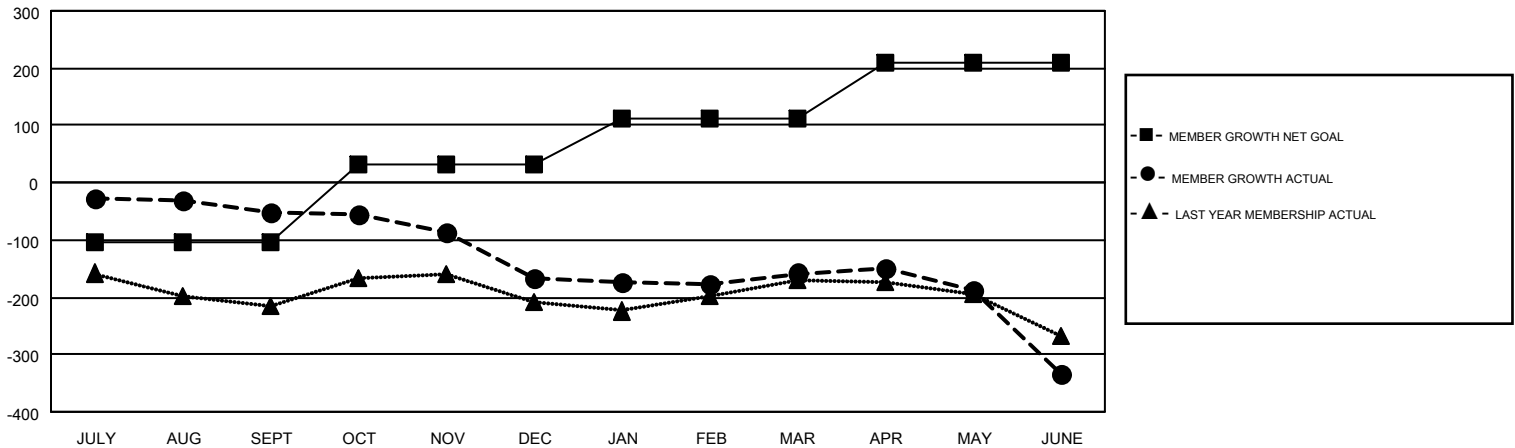
GMT CA 1

Clubs				Members			
RESULTS FOR 2018-2019				RESULTS FOR 2018-2019			
QUARTER	NEW CLUB GOAL	NEW CLUBS	DROPPED CLUBS	QUARTER	MEMBER GROWTH NET GOAL	MEMBER GROWTH ACTUAL	DROPPED MEMBERS ACTUAL (including transfers)
JULY/AUG/SEPT	0	0	0	JULY/AUG/SEPT	-104	91	134
OCT/NOV/DEC	1	0	3	OCT/NOV/DEC	136	183	286
JAN/FEB/MAR	3	0	0	JAN/FEB/MAR	80	141	113
APR/MAY/JUNE	0	1	4	APR/MAY/JUNE	96	203	363

GOALS AND ACTUAL NEW CLUBS CUMULATIVE



GOALS AND ACTUAL MEMBERS CUMULATIVE



DROPPED CLUBS: 7	144 CLUBS OF 225 ADDED 1 OR MORE NEW MEMBERS	GENDER DISTRIBUTION
		MALE 4,581 (65.40%)
		FEMALE 2,424 (34.60%)
DROPPED MEMBERS	CLICK HERE FOR CUMULATIVE MEMBERSHIP DATA	TOTAL FAMILY UNIT MEMBERS 1,135
DECEASED 95		FAMILY MEMBERS PAYING HALF DUES 578
CLUB CANCELLED 41		
OTHER 759		
TOTAL 895		